

40th Anniversary

JANUARY/FEBRUARY 2009
US\$15/C\$15.5/HK\$95/£8/€12/A\$18/₹23

ORIENTATIONS

THE MAGAZINE FOR COLLECTORS AND CONNOISSEURS OF ASIAN ART

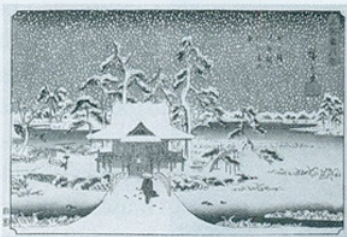


Contemporary Art

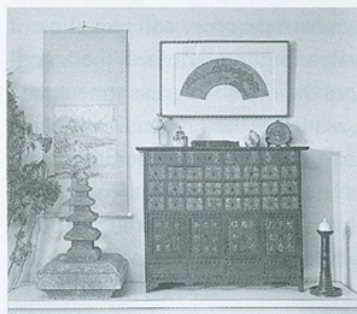
Gallery News

New York

The winter exhibition at **Joan B Mirviss Ltd**, 'Lyrical Images: Poetry and Japan's Visual Arts', which runs until 24 January, features more than 35 examples of woodblock prints, screens and hanging scrolls demonstrating the interplay between text and image, as well as the ways in which literature and poetry informed the visual arts in Japan in the 19th and 20th centuries. For example, a painting on silk by Watanabe Seitei portrays Murasaki Shikibu, the author of the *Tale of Genji*, seated on a balcony under a full moon, while a print from *Famous Places of Snow, Moon and Flowers* by Utagawa Hiroshige depicts the poetic theme of 'snow, moon and flowers', an allusion to love and the changing seasons. Two Zen ink paintings by Hakuin Ekaku and Otagaki Rengetsu illustrate the combination of calligraphy and traditional Buddhist images as a meditative device and tool for proselytization, and the show is rounded out by a selection of *surimono* (New Year cards featuring poetry) and some contemporary Japanese ceramics.



Famous Places of Snow, Moon and Flowers
By Utagawa Hiroshige (1797-1858), c. 1844-48
Woodblock print
Joan B Mirviss Ltd



Moon Hee Kim's newly reopened gallery, **Koreana Art and Antiques, Inc.**

After a hiatus of several years, Moon Hee Kim has reopened her street-level gallery **Koreana Art and Antiques, Inc.** at a new location, 22 East 84th Street, between Fifth and Madison avenues. Kim was among the first to introduce Korean antiques to the American public at her previous gallery, and after a break, has decided to make her huge collection of Korean furniture, paintings and ceramics available once again. She offers a vast selection of chests and other furniture dating from the 18th/19th century, as well as folk paintings of birds, flowers and *ch'aekkori* (scholar's accoutrements). Also featured are Korean ceramics and folk objects. In conjunction with the gallery's reopening, Kim has launched a website, www.koreanaartandantiques.com.

Leon and Karen Wender of **China 2000** are making a move in the opposite direction. As of 1 December, they will be at 434A East 75th Street, a townhouse between First and York avenues. They

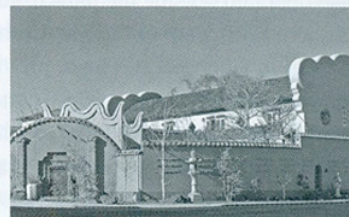


The Wenders' **China 2000** gallery

were previously open to the public, but their new space will be by appointment only, and they will no longer hold shows or participate in art fairs. Instead, they will relaunch and expand their website, concentrating on the Internet side of the business, and spend more time travelling. 'We have had a public face for many years, and we are happy now to be operating this way by showing specific things to private clients on a one-on-one basis over a cup of tea or a glass of wine,' Leon Wender says. The Wenders will also take in works on consignment in response to special requests from their clients, as well as assist them in selling their pieces if the need arises. The new gallery is conveniently located very close to Sotheby's.

Monterey

The grand opening of **Jerry Janssen's** new gallery, **Orientations at the Marsh**, took place on 25 October in Monterey. Specializing in Chinese, Japanese, Korean



Orientations at the Marsh

and Southeast Asian antiquities, the gallery was relocated from San Francisco to the historic Marsh building, which Janssen had dreamed of owning since he was a boy of eight. He finally fulfilled his wish when he purchased the building in 2006 and restored it to its former glory. The Marsh building was constructed in 1927 by George Turner Marsh, an Australian businessman, and was home to Marsh's Oriental Art Store from 1928 to 1998. Modelled on an ancient Chinese mercantile compound and blending northern Chinese and Japanese architecture, the building was added to the National Register of Historic Places in 2007/08. (For a detailed profile of George Turner Marsh and the history of the Marsh building, see *Orientations*, April 1998, pp. 47-57.)

London

'**Making Gods – Gade**', at **Rossi & Rossi** from 3 December 2008 to 16 January 2009, will be the gallery's fourth solo exhibition of contemporary Tibetan artists. It will feature ten new paintings from Gade's *Mandala Series*, *New Buddha Series* and *Diamond Series*, in which he fuses traditional Tibetan painting with symbols of modern consumerism and pop culture icons. Gade's work, which is often full of humour, expresses his fascination with these themes and, he says, seeks to evoke the same kind of richness as that found in ancient Tibetan murals.



Diamond Series: The Hulk
By Gade (b. 1971), 2008
Mixed media on canvas
Height 147 cm,
width 117 cm
Rossi & Rossi

Hong Kong

The owner of an established antique gallery on Hollywood Road, Oi Ling Chiang is expanding into a new arena with the opening of the **Gallery of Contemporary Arts (GOCA)** at 52 Hollywood Road. The new space will present both internationally recognized artists and newly emerging talents. Two ongoing solo exhibitions feature