

ANTIQUES And The Arts Weekly

***** August 31, 2007



Newsstand Rate \$1.50
Outside CT \$1.75

Published by The Bee Publishing Company, Newtown, Connecticut

INDEXES ON
PAGES 66 & 67

Joan B. Mirviss Will Present 'Views From The Past' Sept. 17

NEW YORK CITY — Whether it is New York, London or Paris, news abounds about art and antique dealers retrenching and closing their galleries to become private dealers. One dealer, however, Joan B. Mirviss, a leading Japanese art specialist, is taking the opposite route.

After 30 years as a private dealer, she will open her first gallery — Joan B Mirviss Ltd — at 39 East 78th Street, at the corner of Madison Avenue. Her inaugural exhibition, "Views from the Past, Visions of the Future: Masterworks of Japanese Art" will be on view September 17–October 15.

"The first exhibition in our new gallery will include approximately 55 works of art, including antique screens, hanging scrolls, woodblock prints and contemporary ceramics," Mirviss said. "Many of the screens and some of the paintings originate from old private Japanese collections. The ceramics, which include works by masters of the second half of the Twentieth Century, will also feature works by leading contemporary artists, many of which were created specifically for this exhibition."

When Mirviss started Joan B Mirviss Ltd in 1977 at age 24, Japanese art was just a budding field with a small collector base.

Fast forward to the present: The tremendous growth and interest in Japanese art in the

West, most especially contemporary ceramics, combined with the desires of the clay artists to have an appropriate venue for presenting their best work in the United States, compelled Mirviss to finally take the plunge and open a gallery.

Up until now, she and her staff, have been working out of a apartment overlooking Central Park.

"I am very excited about my new and expanded platform and thrilled with possibilities that will enable me to showcase this art to a new generation of collectors," said Mirviss.

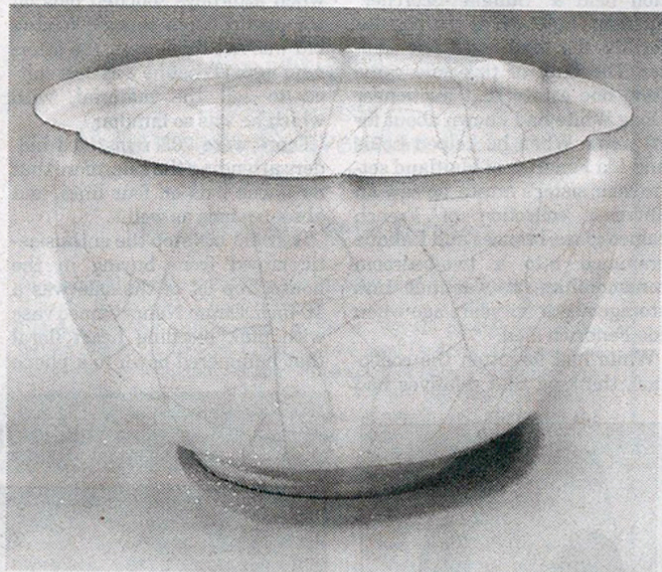
Exhibition highlights include a pair of six-fold screens of peacocks, which epitomize the grand style of one of the most influential artists working in Kyoto during the early Nineteenth Century, Hara Zaichu (1750–1837). Other rare and early paintings are a set of hanging scrolls by the most important Japanese painter of Eighteenth Century, Maruyama Okyo (1733–1795). An early Twentieth Century work that will be included is a two-fold screen of chrysanthemums by Kamisaka Sekka (1866–1942).

In the area of ukiyo-e (woodblock prints), the exhibition will include landscape artists Utagawa Hiroshige's early impression of Plum Estate at Kameido from his series One-Hundred Famous Views of Edo, one of his most recogniz-

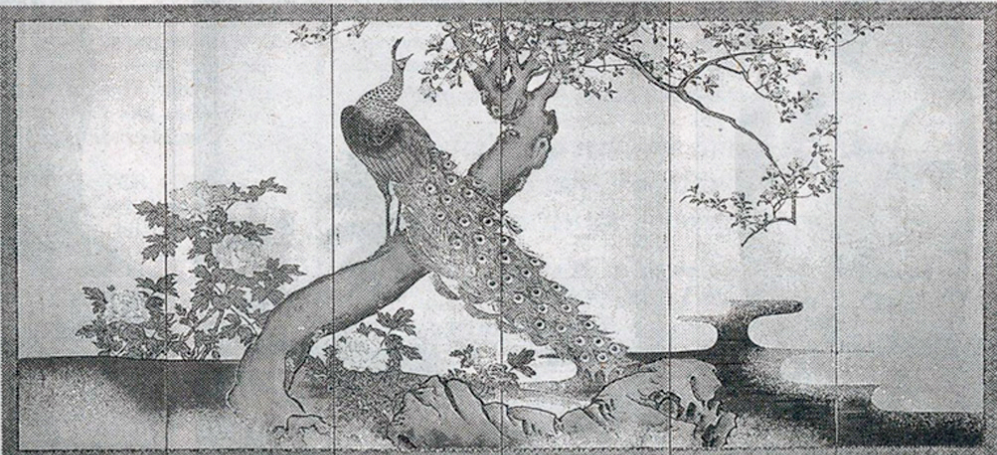
able and influential designs. Perhaps the rarest print on view is an early work of kabuki actors by Tsunekawa Shigenobu with hand coloring and metallic dust.

Contemporary ceramics include a rare "calla lily" vessel by Kawase Shinobu, sculptural vessel with black and red iron glazes by Morino Hiroaki Tamei and examples of contemporary porcelain.

For information, 212-799-4021 or www.mirviss.com.



Miura Koheiji (b 1933), 1980, bowl with cracked seiji glaze, 5 1/4 by 10 by 10 inches.



Hara Zaichu (1750–1837), pair of six-fold screens, 1826, ink, color and gofun on paper with gold leaf; 68 1/4 by 144 1/2 inches each.